



## EXECUTIVE SUMMARY

### OUR VISION:

"That every child in every part of the County should achieve their potential"

# INTRODUCTION

Welcome to the Executive Summary of the Lincolnshire Children and Young People's Plan 2013-16. You can access a copy of the detailed plan at: [www.lincolnshirechildren.net](http://www.lincolnshirechildren.net)

The Lincolnshire Children & Young People's Plan is the strategic plan for all services which directly support children and young people in the county of Lincolnshire.

It shows how the Local Authority and all of our relevant partners will work collaboratively and in partnership, to improve Outcomes and the wellbeing of every child, young person and family in Lincolnshire.

The Plan is based on evidence taken from past performance, needs assessments, consultation with local families and agreed priorities between partners.

It sets the clear direction for the Lincolnshire Children and Young People's Strategic Partnership for the next 3 years.

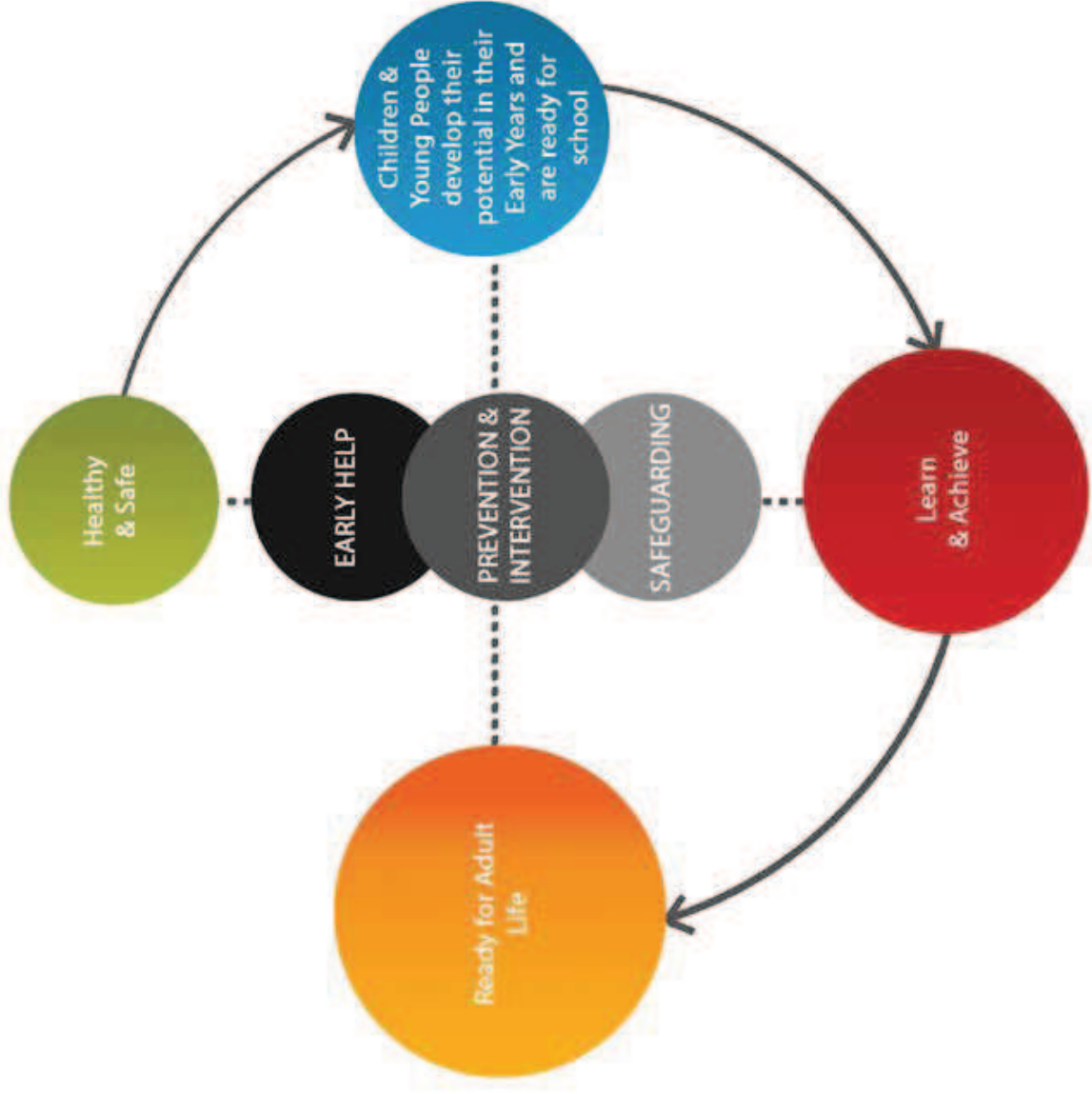
In April 2013 the Strategic Partnership came together to agree our four strategic outcomes;

## Our 4 Strategic Outcomes

- Children and Young People are; **Healthy and Safe**
- Children and Young People; **Develop to their potential in their Early Years and are ready for school**
- Children and Young People; **Learn and Achieve**
- Children and Young People are; **Ready for Adult Life**

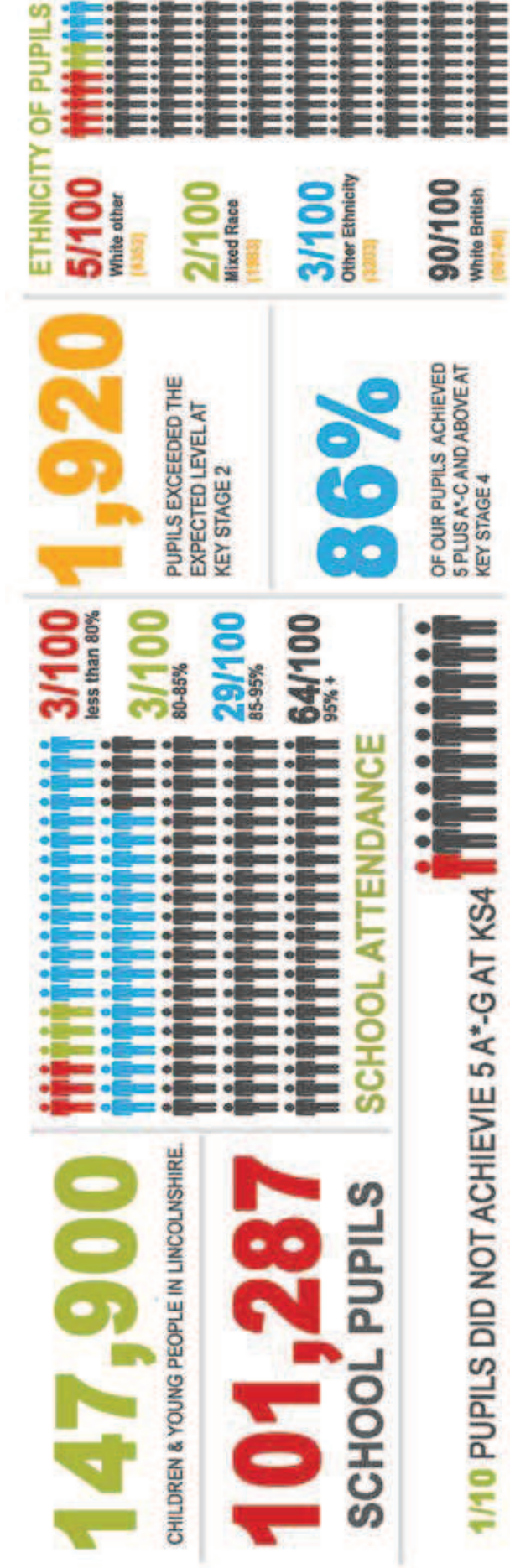
# STRATEGIC OUTCOMES

The Partnership identified **Our 4 Strategic Outcomes** to match the Child's journey. We recognise that at various points in a child's life, they will require additional help and support. This is what we describe as our **Early Help Offer**. We also believe **Early Intervention** and **Prevention** is an effective way to safeguard children and young people.



# ABOUT LINCOLNSHIRE

Lincolnshire is the 4th largest County in England. It is home to 147,900 children and young people. The vast majority enjoy the best start in life and go on to achieve their potential with support and encouragement from their families and friends.



However, for some Children and Young People we recognise that there are times when additional support or intervention is required to keep them safe or to help them succeed and achieve. At the time of publishing there were; 596 children & young people looked after by the Local Authority and 302 subject to a Child Protection Plan.

Children and Young People can require additional support for a variety of reasons. Some times this may need to be provided throughout their childhood and adolescence and even into adult life. What we do know, is that if we can offer help and support at the earliest sign of need, then we have a much greater chance of making a difference to the possible outcomes.

We call this our **Early Help Offer**. The **Early Help Offer** is not just for very young children, because, as we know, problems can emerge at any point during childhood and adolescence. Our **Early Help Offer** includes universal and targeted services which are delivered and deployed in partnership and designed to reduce or prevent specific problems from escalating or becoming entrenched. Our **Early Help Offer** is crucial to our commitment to close the gap between vulnerable and socially disadvantaged children and their peers, especially in educational attainment and health inequalities.



## FACTS & FIGURES

All facts and figures obtained from LCC Performance (September 2013) and Lincolnshire Research Observatory (ONS 2012 Mid Year) . For more facts and figures please visit [www.research-lincs.org.uk](http://www.research-lincs.org.uk)

# ABOUT LINCOLNSHIRE

**Children and Young People in Lincolnshire thrive in our schools and our GCSE results continue to exceed national trends. Despite a reported drop across England in the proportion of exam entries graded between A\* and C our students continue to thrive.**

In 2013, Lincolnshire schools, (including academies), achieved overall results for the national key GCSE indicator of 5+A\*-C (including English and Maths) of over 62.6%, whilst three of our schools achieved 100% at 5+A\*-C (including English and Maths).

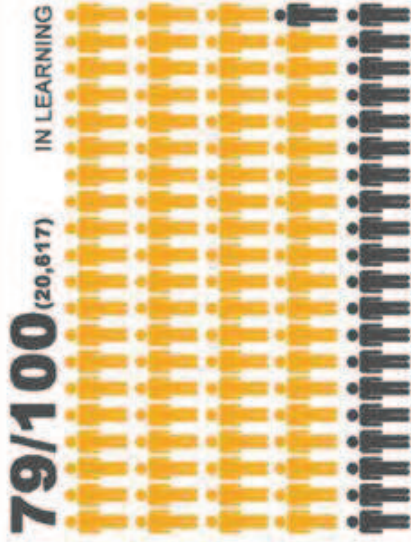


# READY FOR ADULT LIFE

**25,932**  
YOUNG PEOPLE AGED BETWEEN 16-18

**1 IN 25**

WILL NOT BE IN EDUCATION, EMPLOYMENT OR TRAINING (NEET)



**1,550**

WILL BE IN EMPLOYMENT

**84%**

ACHIEVEMENT OF A  
LEVEL 2  
QUALIFICATION BY  
THE AGE OF 19

ACHIEVEMENT OF A  
LEVEL 3  
QUALIFICATION BY  
THE AGE OF 19

**57%**

**71/100**

CARE LEAVERS IN EDUCATION, EMPLOYMENT OR TRAINING



The quality of teaching and learning in Lincolnshire ensures that the majority of young people are well placed to make the transition into further or higher education, employment and training.

However, there are some young people who require additional or specialist support to make the successful transition. Reforms within the Children and Families Bill will radically change how we support children with special educational needs and disability. This will see the introduction of the new Education, Health and Care Plan for children up to the age of 25 years.

# DEVELOP THEIR POTENTIAL IN EARLY YEARS AND ARE READY FOR SCHOOL

**Ensuring that Children in Lincolnshire get the best possible start in life and are ready for school is a key priority for the partnership.**

Nationally, all children are assessed against the Foundation Stage Profile at the age of 5. A key measure at this stage is the proportion of children reaching the expected level of development by this age. Lincolnshire's overall performance in this measure is above average, as is the performance of pupils eligible for pupil premium.

## **Our Children's Centre Offer**

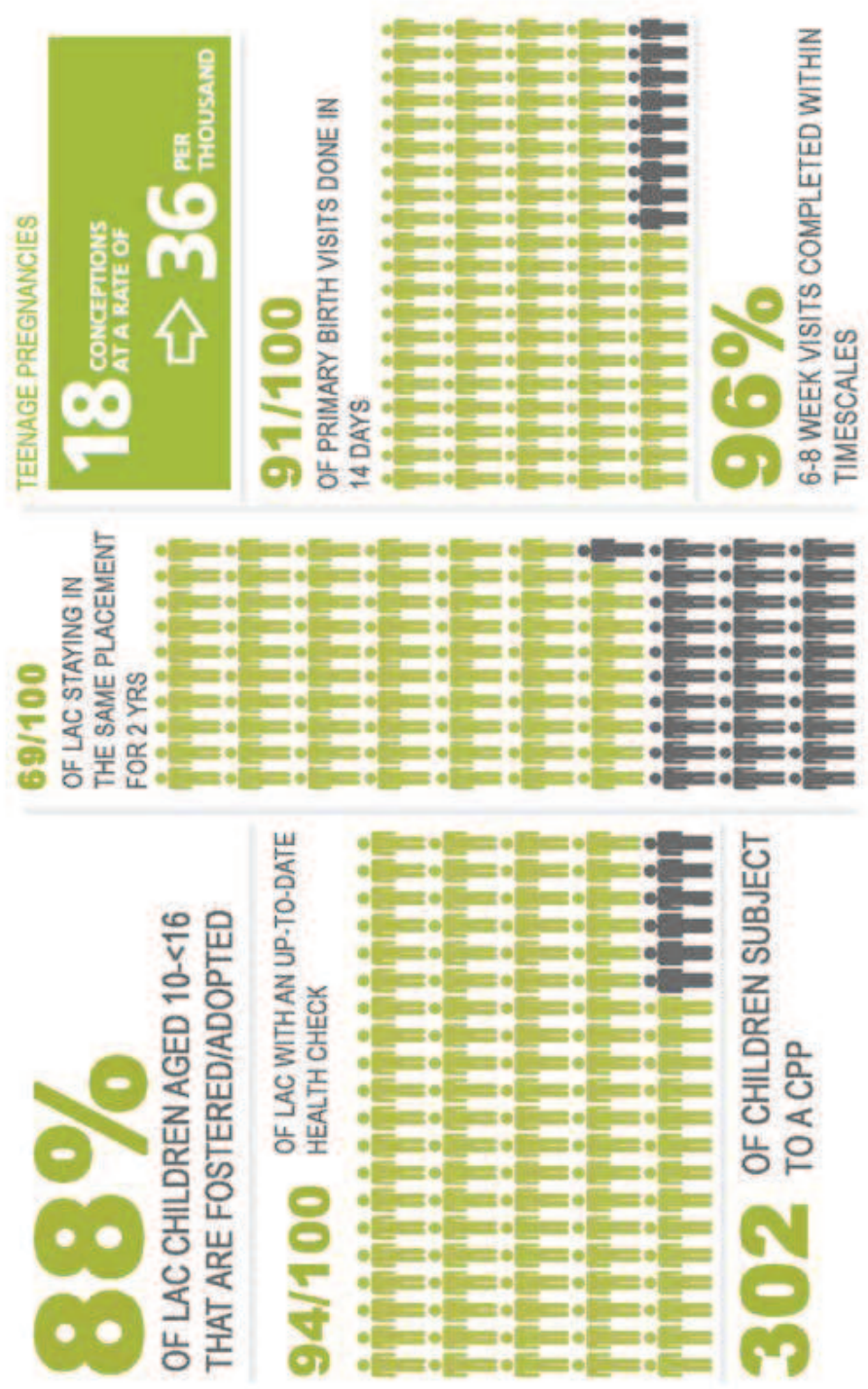
Our Children's Centres are critical in ensuring that children reach their potential and are ready for school. **The percentage of Children's Centre inspections which were Good or Outstanding in Lincolnshire is 85% compared to 69% nationally.** We also know that, in the summer of 2013, there were 8,781 children in Lincolnshire accessing Early Years Entitlement (EYE) with Good or Outstanding providers and there were 9,818 children accessing Private, Voluntary or Independent (PVI) provision in total. This equates to **89.43% of children in Lincolnshire accessing their funded place in Good or Outstanding settings.** This would indicate that children are accessing a quality of Early Year's provision in Lincolnshire that contributes to their readiness.



# HEALTHY & SAFE

## Keeping Children and young people in Lincolnshire Safe

Keeping children and young people protected and safe from harm is a key priority for the partnership. The Director for Children's Services (DCS), the Council's Lead Member for Children's Services and the Independent Chair of the LSCB, have clear, statutory roles and responsibilities as champions for children, young people and their families.



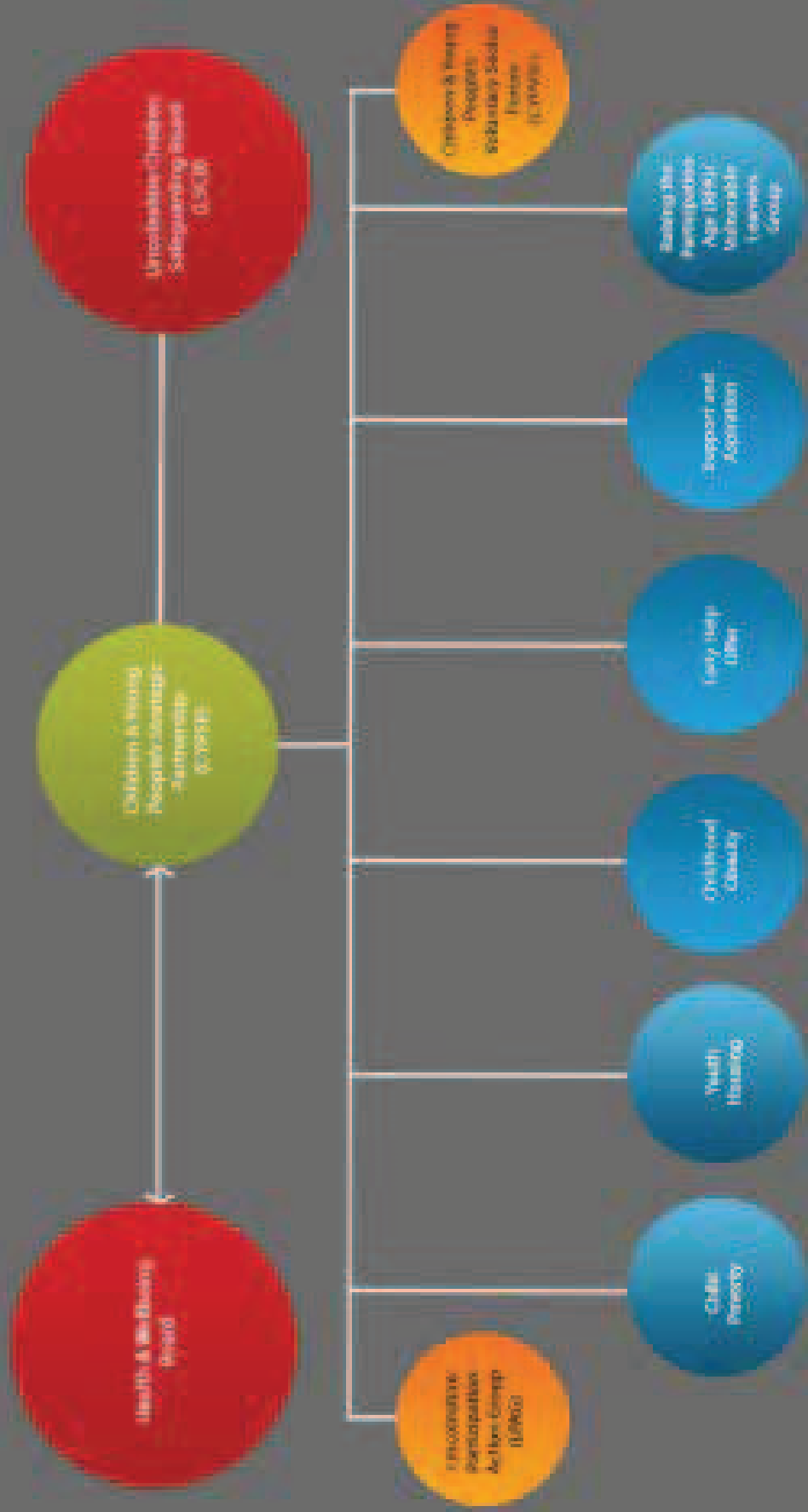
# GOVERNANCE

## **The partnership routinely reviews and amends both its structure and governance arrangements in order to remain viable and relevant.**

Our responsibilities include;

- Developing, publishing and reviewing the Children and Young People's Plan for Lincolnshire.
- Outlining the strategic framework for how partners will co-operate to improve the well-being of children and young people in Lincolnshire.
- Working with the Lincolnshire Safeguarding Children Board (LSCB) to keep children and young people safe and protected.
- Working with the Health and Wellbeing Board to ensure that priorities in the Health and Wellbeing strategy are reflected in the children and young people's plan and to act as the delivery mechanism for those priorities reporting to the Health and Wellbeing Board.
- Publish an annual report.

This diagram shows the relationship between the various Partnerships in Lincolnshire across the three levels of governance.

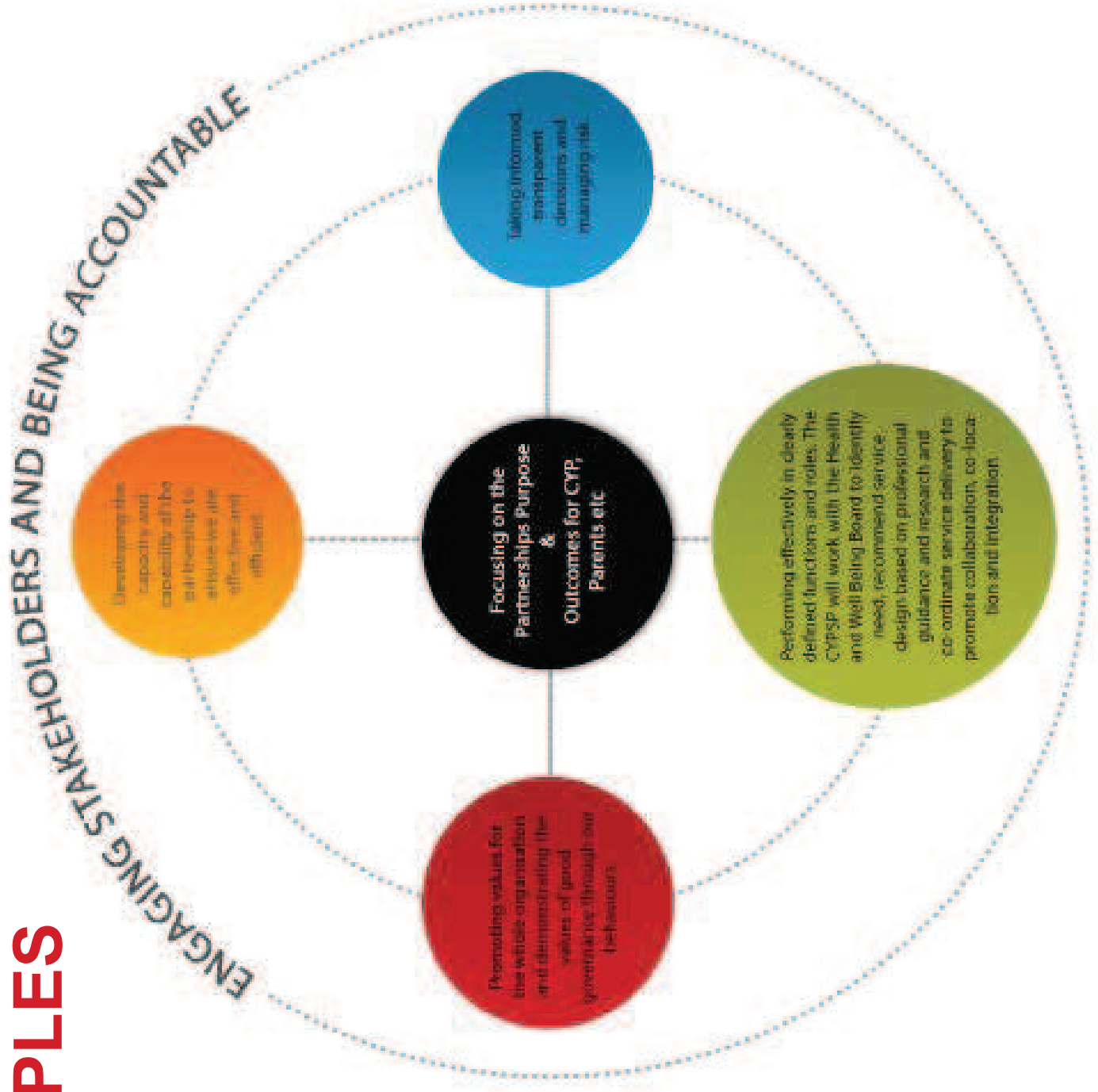


Strategic Goal

Partnership Task & Health Group

# OUR PRINCIPLES

The CYPSP agree to the Six Principles outlined in The Good Governance Standards for Public Services



# USEFUL LINKS:

[www.lincolnshire.gov.uk](http://www.lincolnshire.gov.uk)

[www.lincolnshirechildren.net](http://www.lincolnshirechildren.net)

[www.lincolnshirelscb.org.uk](http://www.lincolnshirelscb.org.uk)

[www.teeninfoincs.co.uk](http://www.teeninfoincs.co.uk)

[www.education.gov.uk](http://www.education.gov.uk)

[www.ofsted.gov.uk/local-authorities/lincolnshire](http://www.ofsted.gov.uk/local-authorities/lincolnshire)

**Published by the Children & Young People's Strategic Partnership**

For all enquiries please contact David McWilliams, Head of Service, Performance Assurance, Children's Services, Lincolnshire County Council, 01522 782111